

**Continuous Ink Supply System
for
Epson Stylus Cx5100
Installation Instruction**

For AT Prefilled Version

With Auto Reset Chips

This Version of the Continuous Ink Flow System comes with Prefilled Cartridges and Auto Reset Chips. You just need to fill the Reservoir bottles and print! The whole operation is very easy. It's really an effective tool to save your money.

CIS for Epson Stylus CX5100

Thank you for purchasing AT Continuous Ink Supply System. We appreciate your support and will try our best to make your experience with our products a pleasant one. Printing has been a different experience ever since you installed AT Continuous Ink Supply system on your own printer. Just imagining being able to print without regard to the ink level in those expensive little cartridges.

Please take your time installing AT Continuous Ink Supply system. Do not remove your old cartridge until you have the AT CIS system primed and ready to install (to prevent the drying of heads). In addition, make sure you are getting perfect nozzle checks before installing the AT CIS system. The AT CIS system won't be able to work properly if the nozzles are previously clogged.

Most people get a perfect nozzle check the first time after installing the AT Continuous Ink Supply system; others may need to run two or three cleaning cycles or let the printer sit for a while before they get the perfect results.

1、 General Guide:

1) Components

A、 CIS system 1 set
D、 Refill Kit 4pcs

B、 Air filters 4pcs
E、 Instruction CD 1pc

C、 Support Arm 1 set



2) Opening box inspection

- Check whether all the accessories are ready.
- Check whether there's leakage of CIS System, whether some tubes have been separated from CISS. If there is, please kindly to contact the local dealer.
- Check whether there is air space in the tube. If the length of air space is more than 20cm, please clean the printer head for 2 or 3 times before printing.

2、 Printer testing:

- Check whether the printer is in normal condition, like mechanical status, lubrication status etc.
- Print testing lines to ensure the printing head is good condition.
- Print pictures to see whether the printing image is ok.

3、 Installation Procedures:

1) First step



Put the CISS on the left side of the printer. In the meantime place all the tubes at correct position.



Pull out the small rubber plug from the air hole as above picture shown.



Place 4pcs of air filters into air holes, the thicker side is down into tank.

2) Second step: Remove out the original cartridges



press the ink cartridge replace button



Draw out the electrical Source



move the cart to the position to change the ink cartridges by hand

3) The third step: Place the Cartridges in



Remove out the original cartridges ,then place down each cartridge according to the color ,in the meantime, make every cartridge in the correct position.

4)、 The fourth step : Fix up the support arm



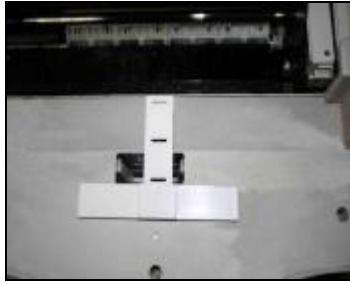
Rip the label



Stick the Support arm at 14.5cm distance from the side of the printer, Rip the

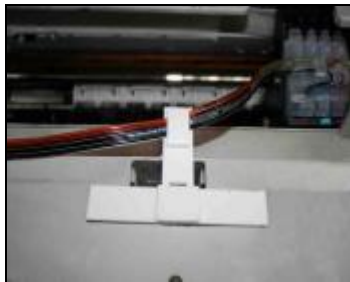


Rip the label on the balance arm



Fix the balance arm stick on the support arm as show on the picture, Rip the label on the shortest arm ,And Stick it on the right side of the printer, but need to keep it in the same horizontal line as show in the picture

5)、 The fifth step: Installing tubes



clip the tubes orderly on the arm, please kindly to see the above picture for reference.

6)、 The sixth step : Adjust the tubes which guide the ink



Adjust the tube length and move the cartridge car. Insure there will no block and collision when the tubes moving with cartridge car .Insure there's plenty length of tube to make the cartridge cart can thoroughly move to the left side.



The tube is excessive long, it is not ok. The tube is twist ,it is not ok. In this situation ,it is ok

7)、 The seventh step

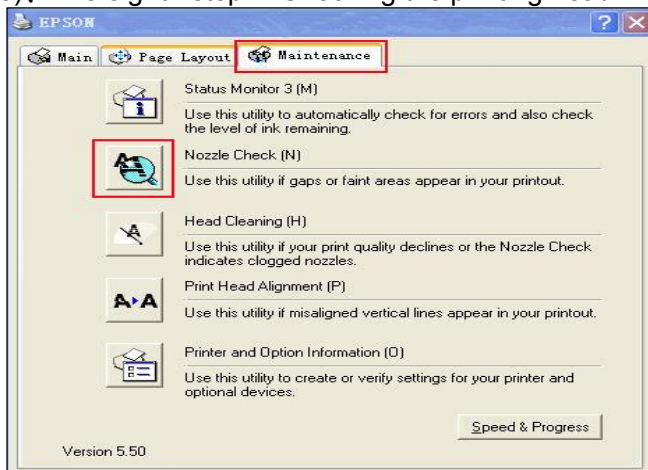


Insert the electrical source line suitably

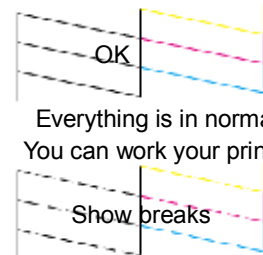


Power on the printer to check whether the printer works well

8)、The eighth step: Checking the printing head



Enter this item

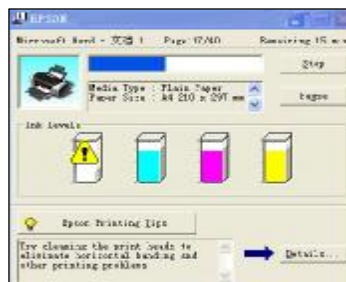


If it show this breaks, please clean the printing head

If there show breaks, please clean your printing head. It is possible that the wispy air have entered into the printing head. If it is still show little breaks specially show in one color, it no need to repeatedly continue to clean. Just keep the printer silent for about one hour, it may disappear. If after testing, it still abnormal, please kindly to contact with local dealer.

4、Reset Procedure:

• XXX ink out --->
Press the Color copy button to begin replacing the ink cartridge.



If the computer screen show above words when printing .it tell you that you need to change the cartridges, the please power off the printer for about 1 minutes and turn on again, this time it will show full on the computer, then it can work in good condition.

5、Refill Ink



Please pay attention to the ink level in the reservoirs; if the ink level is below 1CM as the above picture shown, please use refill kits to fill ink into Reservoir bottles. Carefully pull out the rubber plugs from the refill holes.(there is possibility of ink spattering. Be careful!) Refill ink according to the color in short supply. Then put the rubber back. **(Please keep the printer and the reservoir at the same horizontal line during the process of refilling ink.)**

7、 Attention for maintenance:

Take out the CISS including the inner cartridges and other components. Then remove support arm from printer, and place the original cartridges in. Please inquire local dealer before sending to maintenance.

8.Notice:

1. Please don't take out cartridge at random after installing the CIS system. Keep the reservoir bottles on the same level with the printer.
2. Try to keep at least 1/2 inch of ink in the bottles, as you don't want to run out of ink and draw air into the cartridge.
3. Don't place the Reservoir Bottles higher or lower much than the printer.
4. To be used in a dry place between 15 and 35 degree. Avoid exposure to direct sunlight.
5. Don't put the continuous ink supply systems reversed or leaning during the shipment. Please make sure all the ink filling holes and Ventilation holes are closed tightly during the transportation. Otherwise, the ink shall leak out.
6. Don't sway the cartridge frequently. It may cause ink leakage.
7. Don't pull out the connector of cartridge and don't tear off adhesive tape at the bottom of cartridge.

9.Warning:

1. Not drinkable; keep it out reach of children.
2. Avoid exposure to direct sunshine and don't keep it in high or freezing temperature.
3. Avoid collision and fallen down.